



Westampton Township Emergency Services
Bureau of Fire Prevention
Office of the Fire Marshal

780 Woodlane Road Westampton, New Jersey 08060
 Phone (609) 267-2041 ext. 215 Fax (609) 267-3305
 www.westamptonfire.org



TRUSS CONSTRUCTION SIGNAGE

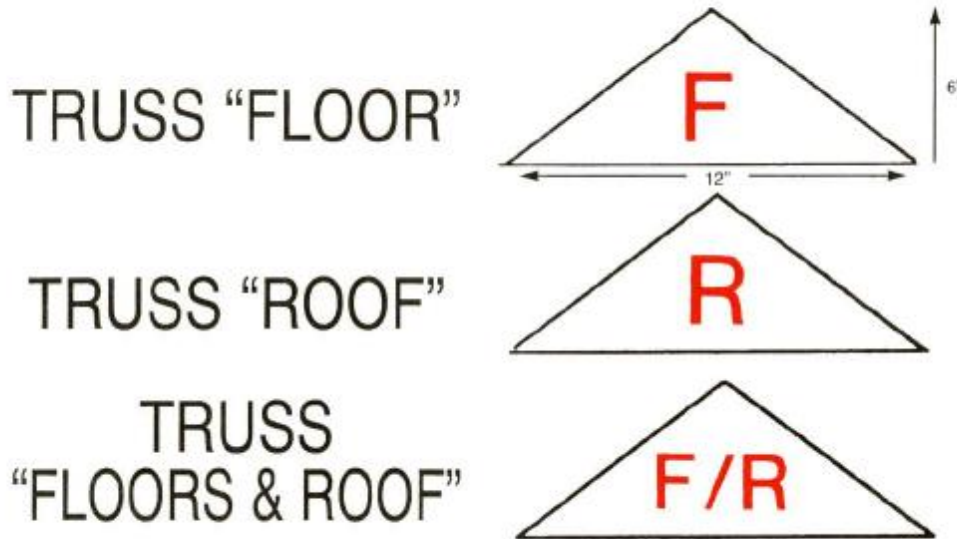
N.J.A.C. 5:70-2.20(a)1

“TRUSS BUILDING”

Isosceles Triangle Signs

N.J.A.C. 5:70-2.20 (a)

The emblem shall be of a bright and reflective color, or made of reflective material. The shape of the emblem shall be an Isosceles Triangle and the size shall be 12 inches Horizontally by 6 inches Vertically, with Letters of a size and color to make them Conspicuous, shall be printed on the emblem, as shown in diagram below.



N.J.A.C. 5:70-2.20 (a) 2

The emblem shall be permanently affixed to the LEFT of the main entrance door at the height of between 4 ft. and 6 ft. above the ground, and shall be installed and maintained by the Owner of the building.

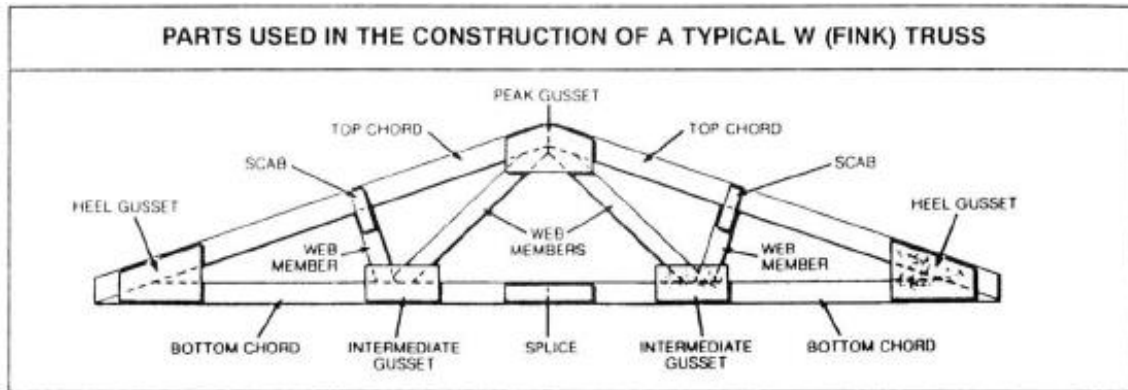


Westampton Township Emergency Services

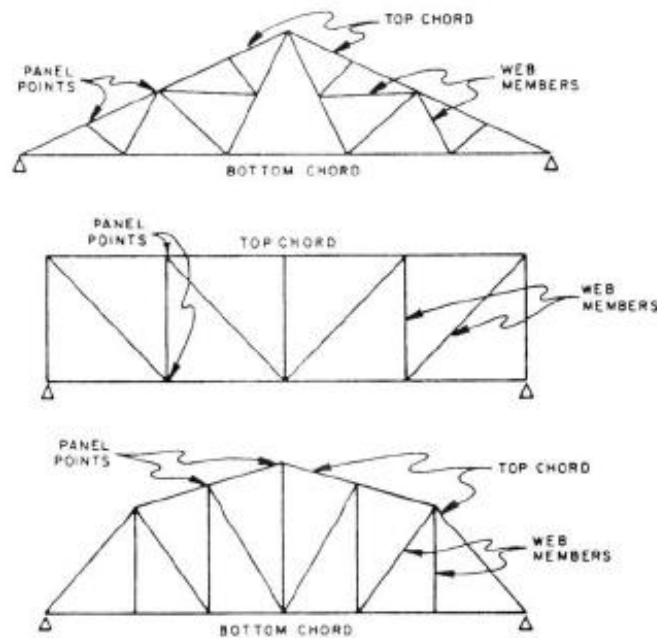
Bureau of Fire Prevention

Office of the Fire Marshal

780 Woodlane Road Westampton, New Jersey 08060
Phone (609) 267-2041 ext. 215 Fax (609) 267-3305
www.westamptonfire.org



A truss is made up of top chords, bottom chords, and web members tied to the chords with gusset plates. Gussets shown in this drawing are made of plywood.



Three basic types of trusses. There are many designs for trusses, each with its own name.